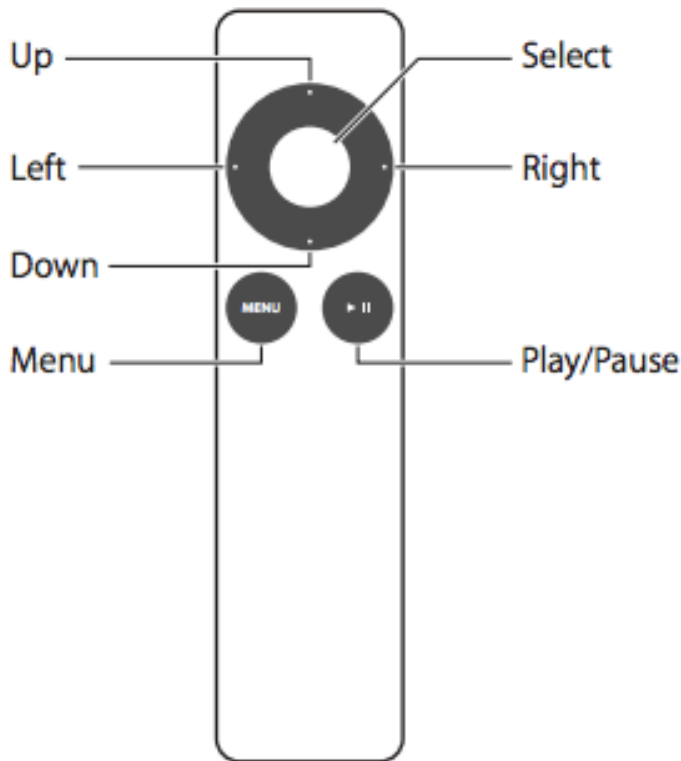


Using your Apple remote

Use the Apple Remote to control Apple TV settings and navigate your content. Make sure there are no obstructions between the remote and Apple TV.



Basic remote functions

Here's how to use your Apple Remote:


To	Do this
Move through the menu options	Press Up, Down, Left, or Right
Select an option from a menu	Press Select
Return to a previous menu	Press Menu
Pause or resume current playback	Press Play/Pause (▶)
Return to the main menu	Hold down Menu
Reset Apple TV	Hold down Menu and Down, until the Apple TV status light blinks rapidly

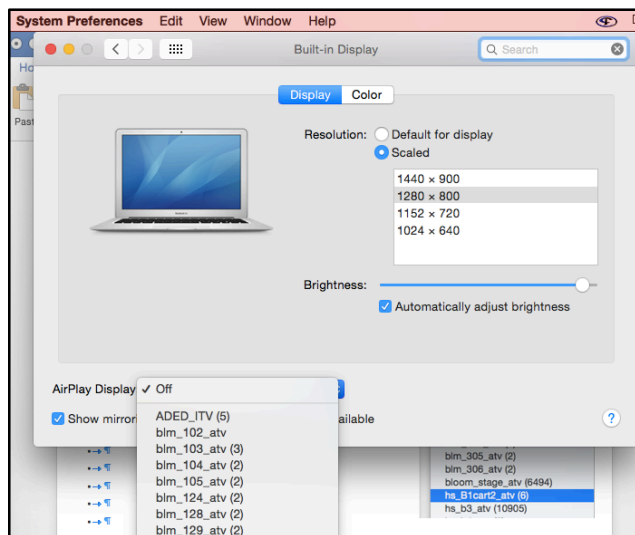
Using AirPlay to see your Mac screen on an HDTV

Note: You may need to allow a few minutes for input to be picked up by AppleTV.

Choose an Apple TV as an AirPlay display


To start using an AirPlay display:

- Click the AirPlay icon  in the menu bar, then choose the name of an Apple TV under "Connect To AirPlay Display." The icon is blue when your Mac is using an AirPlay display.
- Or use Displays preferences: Choose Apple menu > System Preferences, click Displays, then choose the Apple TV from the AirPlay Display menu at the bottom of the window.

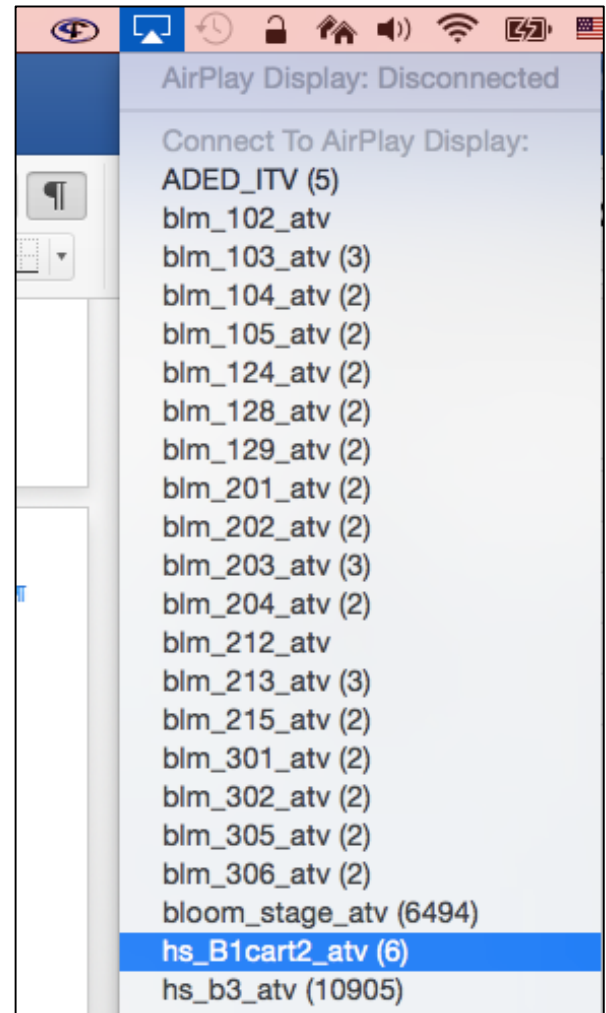


- Apple TV automatically switches to the Mac that is most recently attempting to use it as an AirPlay display.

To stop using an AirPlay display:

- Click the AirPlay icon , then choose Disconnect AirPlay Display.
- Or use Display preferences: Choose Apple menu > System Preferences, click Displays, then choose Off from the AirPlay Display menu at the bottom of the window.
- Or press the Menu button on the Apple TV remote.

<https://support.apple.com/en-us/HT201343>



Using the AppleTV and projector without your computer

Please turn on the projector
(You do not need your computer)

Wait for the AppleTV home screen to appear.



If you do not see the AppleTV home screen you may need to wait for the projector to cycle through display connections (Computer 1, Computer 2, Video or HDMI) until it realizes it is not connected to a computer and goes to the default of AppleTV or using your Projector

You can use your projector remote to hasten this process along. On the remote choose Video or HDMI. On some remotes you will need to click on Source before you see the option for Video or HDMI

There may be more remote models hanging around. See tech if you are not sure how your remote works



Apple TV: Arranging and hiding icons on the main menu

You can rearrange most of the icons on your Apple TV's main menu (Podcasts, iCloud Photos, Trailers, and more).

Note: You can't move or rearrange the icons in the top row (for example, Movies, TV Shows, Music, and Computers).

To change where an icon appears on the main menu, follow these steps:

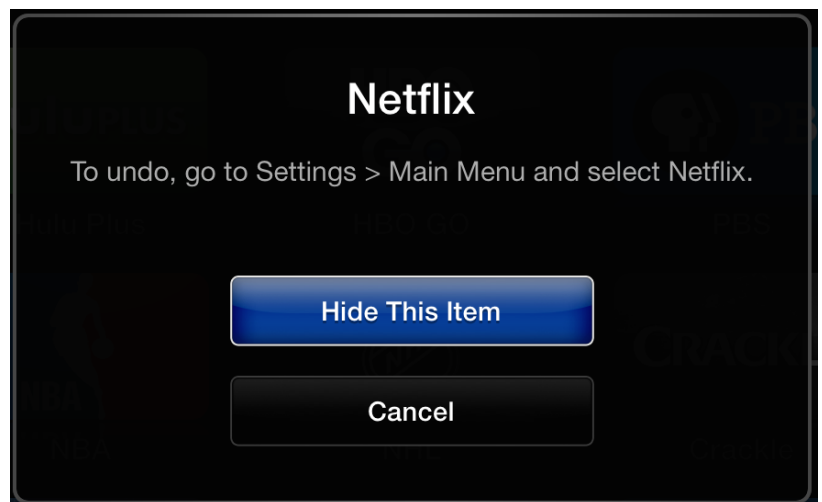
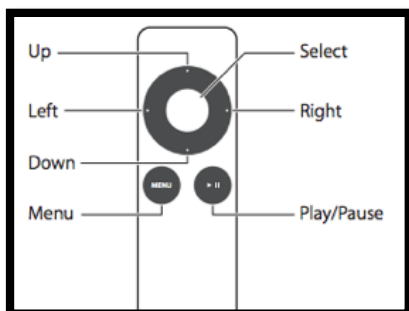
1. With your Apple TV remote select the icon you want to move.
2. Press and hold Select on the remote.
3. When the icon starts to jiggle, use the remote to move the icon to a new position.
4. Press Select again to finish.

You can repeat these steps to move other icons.



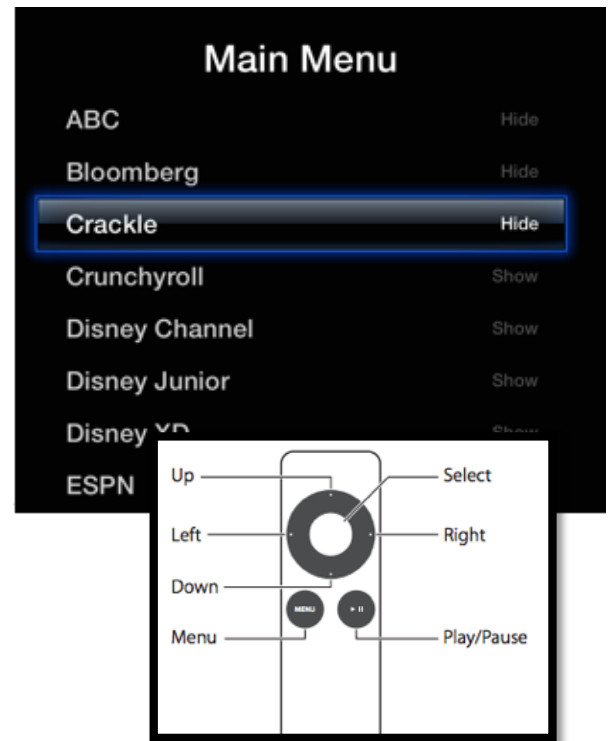
Hide icons using the Apple Remote

1. Select the icon you want to hide.
2. Hold down the Select button on the remote until the icon starts to jiggle.
3. Press the Play/Pause button for more options.
4. Select (click) Hide This Item.
5. Passcode will be 0000, just click through using the remote.
6. (Right button on remote 4 times then select)
7. Click Menu on the remote repeatedly until you return to the Apple TV home screen.



Hide/Show icons using the Settings menu

1. Use the remote to click on Menu
2. From the main menu, go to Settings
3. Scroll down to Main Menu
4. Select
5. Passcode will be 0000, just click through using the remote.
(Right button on remote 4 times then select)
6. Find the service you want to hide or show.
7. Click the Select Button Hide or Show.
8. Click Menu on the remote repeatedly until you return to the Apple TV home screen



Pairing with online programs (Netflix, PBS, etc.)

Pairing AppleTV and PBS

Using your computer create an account in PBS, PBS Kids, Netflix, YouTube, etc.

- You will want to be logged into your PBS account.
- On your Apple TV Menu, click on the icon for the program you wish to use
- Passcode will be 0000, just click through using the remote.(
Right button on remote 4 times then select)
- Click on the Welcome/Activate prompt.
- You will receive a code to activate
- Go to <http://www.pbs.org/activate>
- Type in the code

You will be prompted to activate the program with a code. Type the code in your browser window



How to update software on your Apple TV (2nd and 3rd generation)

Update your software

1. Select Settings > General > Software Updates. Apple TV checks for an available update; if one is available, a download message should appear.
2. Click Download and Install to start the download process.

Do not disconnect your Apple TV during the update process. The Apple TV status light may flash slowly during the update and restart process. This is expected behavior.

Using AirPlay with an iPhone or iPad

1. Be sure your iOS device and your AirPlay device are on the same network.
2. On your iOS device, swipe up from the bottom of your screen to access the Control Center.
3. Tap AirPlay



4. Choose which ATV
5. Turn on mirroring
6. Enter code

<https://support.apple.com/en-us/HT204289>

